

Discovery Forest

A Living Laboratory for Nature-Based Solutions
16 Acres of Multiple Ecosystem Agroforestry Conditions
Temperate Zone 7/Southeastern Pennsylvania

Possible 6 Acre Land Acquisition?
NLT Protected, Wooded Ravine, Open Canopy
Currently an Open Building Lot for Sale

¼ Mile+ Sloped Driveway – needs Time-Lapse Erosion Design
Erosion Control Plantings Uphill of Driveway – Time-Lapse Visuals

Open Deciduous Woods on Hillside
Erosion Challenge
Needs Vegetative Capture And Reuse Swales

BARN YARD

BARN

Open Building Space TBD

Open Field ¼ Acre
Forest "Edge Hedge"

1770 Colonial House
& 1741 Log Building

Open, Hillside, Lightly Treed Pasture

Flat Pastureland near Spring-Fed Stream
Possible Underground Springs
Possible Spring-Fed Pond?

Steep Open Hillside laden with Berry Bushes

Wetland

Springhouse

Spring Fed Stream #2
Watercress Year Round

Spring Fed Stream #1

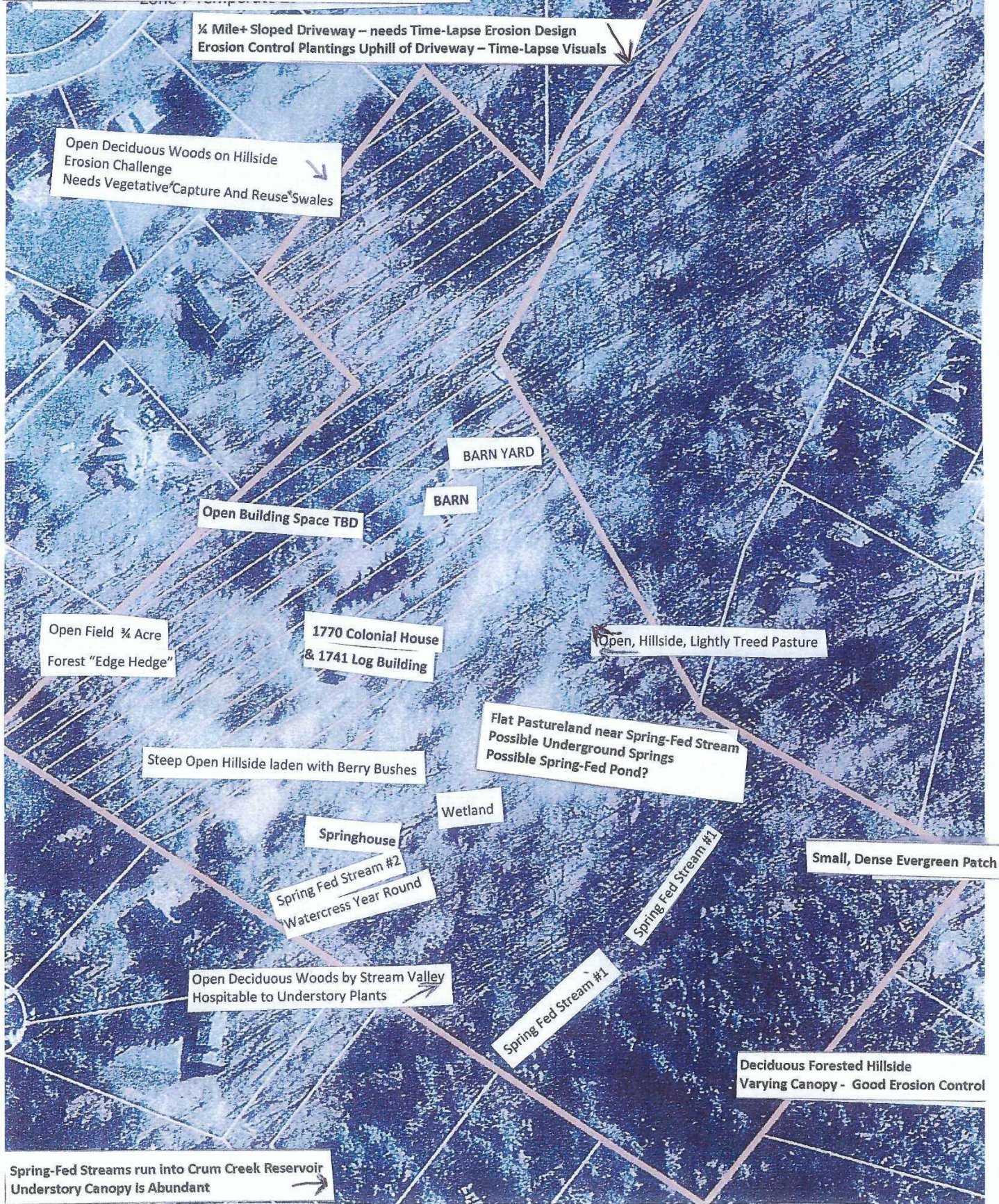
Small, Dense Evergreen Patch

Open Deciduous Woods by Stream Valley
Hospitable to Understory Plants

Spring Fed Stream #1

Deciduous Forested Hillside
Varying Canopy - Good Erosion Control

Spring-Fed Streams run into Crum Creek Reservoir
Understory Canopy is Abundant



The variety of Ecosystems make this location an ideal site for the Living Lab of Agroforestry Discovery.

There is a sufficient Variety of Tree Canopy, Water and Open Canopy Areas to be worthy of Multiple Learning Sites to expand the Agroforestry knowledge base. This land is completely Private and Secluded from View and is under protective easement with The Natural Lands Trust; protected into perpetuity. It is largely untouched and will benefit from being cleared of invasives as Site Analysis proceeds, so that there is a clean palette for design. The selective clearing process will also be filmed, starting Day 1

The Ecosystems are wonderfully diverse and include A Wide Range of Canopy Shade Growing Conditions

Two spring-fed streams and a **2-story Spring House**. There is a fireplace on the upper floor and cold storage and a root cellar on the lower floor. There is a stream emanating from the spring that grows watercress year-round. There is an additional **Spring-Fed stream** that runs the entire length of the Discovery Forest Valley; it once had a dam.

A Wetland emanates from the Spring House stream area.

A Steep Open Hillside, that is currently laden with volunteer Berry Bushes.

A Flat, Open Deciduous Woods along the Stream Valley; the current canopy is very hospitable to Understory Plants.

Dense Pine Woods and Tall Pines along the upper hillside forest property borders.

Open Deciduous Hillside Woods, with great Erosion Stability, but very sparse Understory or Groundlings.

Very Lightly Treed Flat Open Pasture near the Stream Valley, with Sycamore Trees. There may be underground springs in the open flat pasture, which might be able to be persuaded to accommodate a pond...

Open Deciduous Woods on a Hillside: just right for an 'Erosion Control' Vegetative Swales Demonstration Project

A One Acre Open Flat Field, perfect for an Edge Hedge or Orchard Plantings. A majestic Mulberry Tree is at its edge.

Very Lightly Treed, gently sloped Pasture area.

A Flat, Lightly Canopied Barn Yard, with tall Walnut Trees.

Edge-Hedges bordering all of the Forested Areas are bursting with "volunteer" plants.

There is a fully functioning **Well** near the house that has been temporarily capped, plus full-access to **public water**

There is a **2-story Spring House**, the stone ruins of a **Bank Barn**, which will be restored in a collaborative design that will serve The Discovery Forest's research, plant processing and cuisine needs, as well as an **18th Century Stone Colonial House**, that will serve immediately as **The Discovery Forest Center** for gatherings, operations, fundraising events, and accommodations.

The 1770s house will function immediately as the Primary Gathering, Processing Center, and Culture Kitchen. It is 5000 S.F. of capacious and is ready to function as the office, for fundraising events, meetings and gathering areas and can easily host multiple resident participants. It can easily accommodate 6-plus. It has a large open kitchen space to launch a "culture kitchen" as the Foodstuffs appear and begin to feed the Crop Mission-Goals-and-Purpose Sequencing.

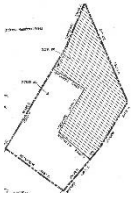
The Discovery Forest Operations Process will expand as the **barn** is collaboratively designed and re-built for The Discovery Forest Project's expanding needs, through an organizational Mission and Goals Iterative Collaborative Process.

The contours of this location appear to be much the same as it might have been in the 1680s, when the Lenni-Lenape Sachems and William Penn first met, both possibly being frequent visitors to this peaceful spring-fed stream valley, lured by the fresh spring water and the game it attracts. There was a Lenape Village at very nearby Crum Creek Watershed and eventually, sometime before 1771, early Quaker settlers built a stone house and a stone spring house over one of the open springs on this site. In the mid-1860s, a barn was built and there is evidence of farming activity, but otherwise, the conformations of the land and the spring-fed streams that define it, keep the spirit of the location as an echo to how mankind has always been drawn to this valley. This is **an ideal site for re-discovering First Foods and early First Peoples' Medicinal Plants** and the biodiversity of woodland plants that may have been here in the past is available in the extensive archives of nearby 1728 Bartram's Gardens. (A listing of some very specific Native American Ethnobotany plants that were part of this Ecosystem in the 1700s appears in "Site Analysis".) It is not beyond fancy that this gentle, spring-fed stream valley and its gentle hills and fields may stand as a memorial to the 70 years of peaceful harmony that existed between the Lenape people (The Grandfathers) and the Quakers (The Friends). Much of the documented peaceful, respectful, and accepting friendship that pervaded those mutuality relationships is memorialized in the 1683 book that William Penn wrote about the wonders of the Lenape people, called "The Lenni-Lenape or Delaware Indians" and in a letter that the Lenape Sachems dictated to William Penn when he had temporarily returned to England.

(More specific information about that epochal relationship is in "First, Present & Future Peoples".)

The riches of the resource-laden Agroforestry Environment that were shared among the Lenape and Quaker peoples in these very living Ecosystems, are an exciting example of the truth of this valley's 17th and 18th century harmony paths, *paths that can be again*: As honored in the iconic song, *America The Beautiful*, we can add this spark: "and crown thy good with brotherhood."

A perfect peaceful valley where we get to start again, but this time wiser, and this time, together!
"The World is Round, and the place which may seem like the end, may also be the beginning."



There is the possibility of someday acquiring **6 acres of immediately contiguous woodland**, which could easily be adjoined to the **16-acre** parcel. It currently has widely spaced woodland valley trees and an intriguing ravine-style conformation. This particular parcel is also under easement with The Natural Lands Trust. That would give The Discovery Forest **22 Acres** to create research for Agroforestry Renewal!

The Spring House has not yet claimed its specific purpose in The Discovery Forest plan. It has a stone fireplace on the second floor and the walls in the understory have evocative stone storage shelves in the stone walls for food preservation. The underground spring is active and flows into the valley. The Spring House and its Wetland bounty is standing by to know its Mission, Goal and Purpose.

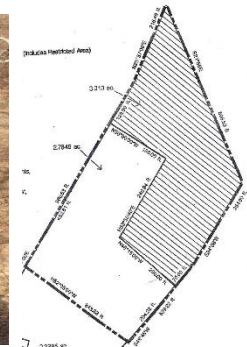
The Quakers built this **Stone House** and the **Spring House** sometime before 1771 and, for decades, were the unusually peaceful neighbors of the Lenape people, who did have a village nearby, at Crum Creek. (There IS written documentation) Perhaps the Spring House predated the main house; it has a fireplace on the second floor....



1771 Stone House & 1741 Log House & a capped well



Spring House (2nd Floor Fireplace)



Contiguous Wooded Land



(The woodland in the background of these photos IS part of the property ecosystem)

THERE IS A UNIQUE, PROPHETIC & MEANINGFUL PHOTOGRAPH AT THE END OF THIS PRESENTATION (p.30)
(Don't miss it.... ..Hey, what does it look like to you?)

The Discovery Forest Ecosystem Photographs

16 Acre Parcel, 2 Spring Fed Streams, Multiple Ecosystems and a Diversity of Canopy Varieties

The Spring House, The Wetlands and The Watercress Spring Stream (Starting with *The View from The House on The Hill*)





Corner Fireplace and a Dedicated Opening in the Floor for a Ladder to the Storage Area Below



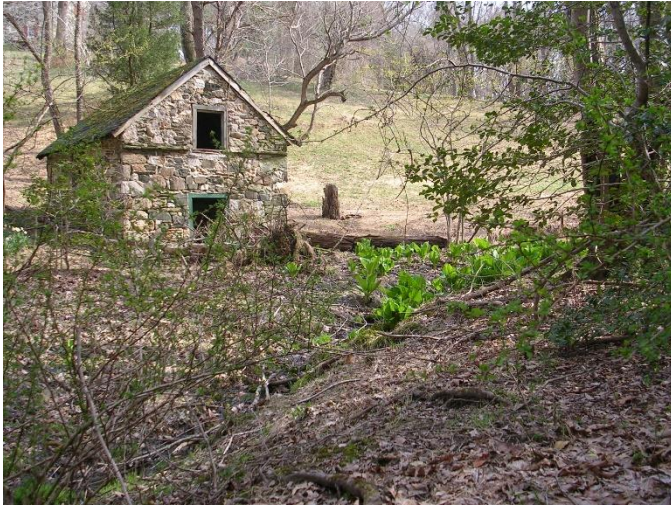
The Springhouse is ready to reclaim its place in the Agroforestry Domain as it once did



**The Wetland in Winter
This is a Palustrine Wetland**

(more about that & companion plant possibilities in "Site Analysis")

The Watercress seems to grow year-round. Watercress insists on a clean, pure water source. The purity of the water has been confirmed by The Delaware County Conservation Association



Spring House Lower Level

Spring House Lower Level

Charming Stone Storage Shelves in the Walls

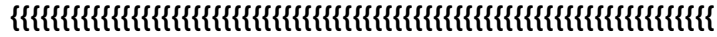
Interior Ladder opening to the Upper Floor

Active Lower-Level Spring-fed Stream which flows into the Wetland, supporting Watercress

Central Pad surrounded by Cool 50-degree spring water for the Storage of Perishables

The Spring House surely played a part in the Agroforestry Operations of the 17th and 18th Centuries

Perhaps there were also Underground Food Caches and Storehouse Cold Rooms and Root Cellars on the property



Some Photos of the Ecosystems

These photos capture *some* of the Variety of the Landscape. Mainly these photos show the open tree canopy and wetland areas. Some of the open tree canopy areas in the flat areas of the pasture may be harboring underground springs that could become a pond.... We'll see...

The photos do not yet completely capture the significant acreage of woodland deciduous trees and its variety of canopy and density nor the hillside forest patch of dense evergreens.

Photos that *do* show hillside forest in the background of pictures *are* part of this property.

VIEW OF OPPOSING HILLSIDE ACROSS THE VALLEY



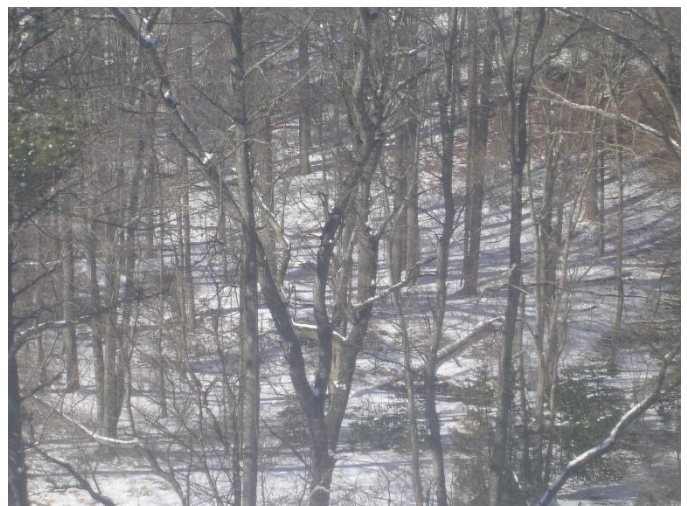
(Further up the hillside is a small patch of Evergreens, (not pictured))





Much of the *Interior* of the Deciduous Forest Hillside looks like this in Winter:

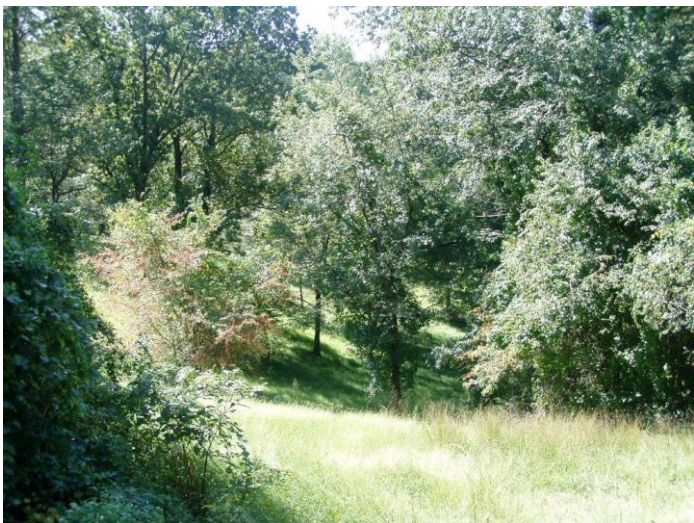
The Spacing of the Trees on The Forested Hillside does effectively control erosion and also affects the amount of light that will make it to the forest floor. This significantly affects the understory Food and Medicinal Plants that can Thrive. Experiments with Available Light and their understory possibilities in existing forests will reveal so much. There is much for Discovery Forest to “discover” in the 14 existing varying Ecosystems and Seasonal Tree Canopy variations in relationship to viable Food and Medicine Crops and how they might be adjusted for the benefit of all. Experiments in the Living Lab for Nature Based Solutions may be able to focus how to optimize our ability to maintain our trees and also optimize sustenance productivity for all creatures.







Open pasture slopes with varying openness to light, some tree-groves and varying tree canopy groupings dotted through the open pasture...



View into the Valley from The Rear Porch

The Foxes tend to like this view of the valley



The Open Pasture, looking back up toward the house





Several Sycamore Trees in the distance (by the spring-fed stream).

The Lower Pasture is flat and only supports low grass. Are there underground springs here?

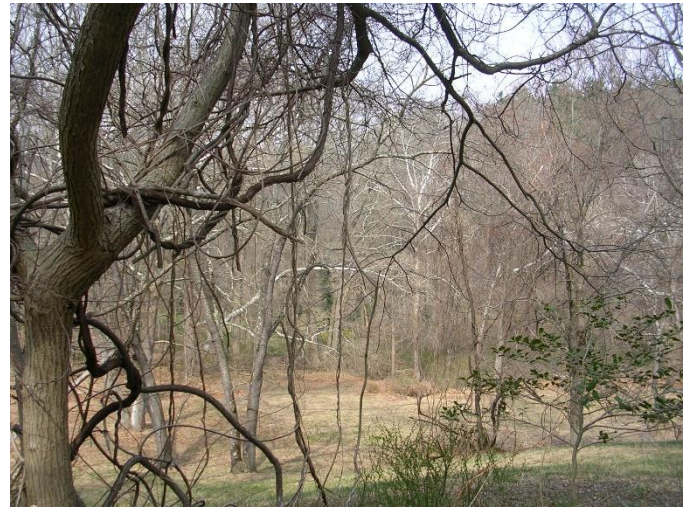


Are there underground springs in these open flat areas at the bottom of the pasture.... (springs that could feed a pond?)



Sycamore Trees happily dwell in this flat area near the Spring-Fed Stream.

Very little undergrowth volunteers to grow here in this flatland, and there is a seemingly water-related Ground Crevasse that seems to indicate underground water activity ... Are there possibly underground springs here in this flat low-growth area that runs at the edge of this valley that could feed a pond? A spring-fed pond might open up a Voyage of Agroforestry Discovery... Such discoveries could dovetail with outreach in helping people uncover hidden springs on their own land... It would be especially helpful to we capture a Time Lapse of the Discovery Process of finding springs and creating a pond if that's what's happening here... So many valuable Springs and Wetlands have been paved over or simply lie dormant and undiscovered.





Fresh Water... Secluded and Quiet Land.... **Habitat Heaven!** There are many Owl Species, Woodpeckers, Racoons, Foxes, Chipmunks, Rabbits, Bats, Red-Tailed & Red-Shoulder Hawks ... they gather here or just pass thru. There is sufficient deadwood for mushroom growth, biodiversity, insects, and a multitude of bird species!

Every year the Foxes have kits in the "FoxLand Nursery"; at least one kit from previous years shows up to "kit-sit".



So many volunteer foraging specials! Ramps, Mushrooms, Fiddlehead Ferns, Mustards...

Berry Hill

Traditionally, multiple berry bush specimens "volunteer" thickly on this very steep hillside







One Acre Flat Open Field, very lightly treed





One lone Orchard Tree in the Open Flat Field

There are some Flat Open Canopy Areas and some Forested Areas in the Upper Fields. These are good “Edge-Hedge” Areas. The Compost Heap is here, as well as the underground Public Water Line. The Flat Orchard Edge/Compost Area might be good place for a Tool Shed...

There IS drivable access to these Upper Flat Fields and the Forested Areas as well as access to an overland Field-Quality Emergency Exit.



This drivable access goes to the Upper Flat Fields & Forests opens to the Emergency Exit



Beautiful Noble Oak!

SPRING-FED STREAM WOODED AREAS - WITH MORE DENSE UNDERGROWTH





This is the Watercress that thrives year-round in the Spring-fed Stream that emanates from The Spring House (I'm not sure of the cultivar...) It IS a testimonial to the purity of the water...







Shhhh....This is someone's home







There are Beautiful Moss-Covered Logs in this more dense understory growth/dry area near the spring-fed streams.



d





Someone once attempted a dam.... It seems to have created eroded stream banks...



Spring emergence in the Wetland





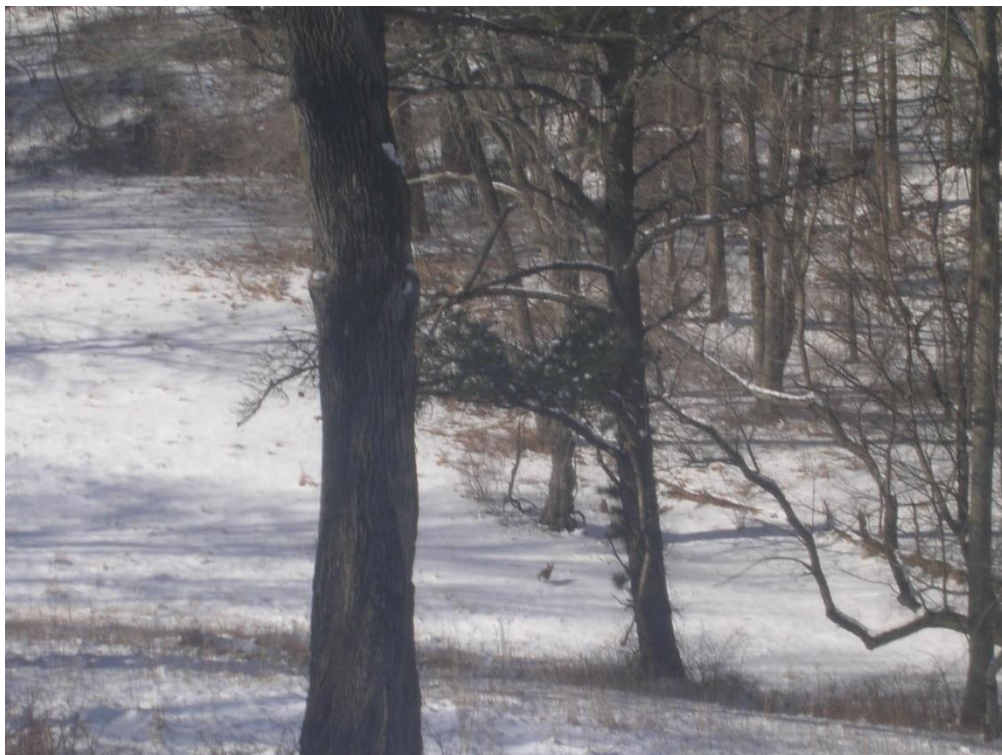


Daylight hunting begins when the hungry kits are born



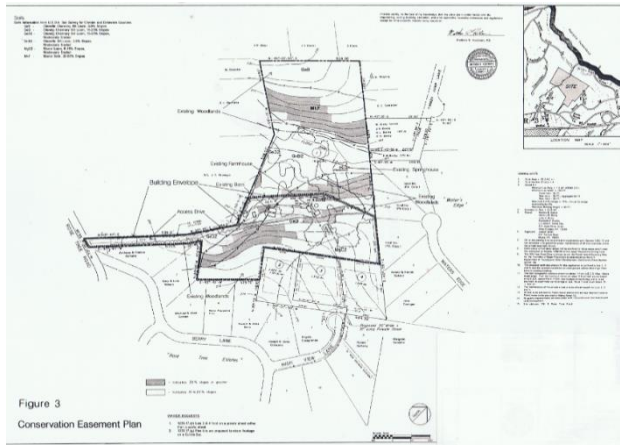
**This Treasure was watching the house all day for some reason
Fox in the grass at porch edge. surveying the valley...**

Fox on the run!





Discovery Forest Center



More specific detail drawings are in “Site Analysis”

There is more detailed information and more drawings about the specific soil types, slope gradients, a summary inventory of current plants, A Native American Ethnobotany Plant List from the 1700s & other topographical aspects of The Ecosystems’ Acreage.

This is a very special specimen tree on the property, just beyond The Wetland!

Just like “The Sword in the Stone” of the Arthurian Legend...

There IS... “A Stone in a Tree”!



As you think “iconic”, what does it look like to you?

(Learn more about the story this picture foreshadows in “First, Present & Future Peoples”

The National Agroforestry PR Campaign: Capturing the Wonder of Agroforestry Visually! **Using Time Lapse Photography to Capture Visual Images in The Ecosystems (Creating 1-minute, 5-minute PR images)** **Starting Day 1 with a 2yr/5yr/10yr “Backwards Design” STORY BOARD to capture the full Agroforestry Story Visually**

Time-lapse photography is used to capture change or movement that occurs over a long period of time. In order to capture human activity, how a plant grouping grows or a landscape develops, a camera is set in a fixed location and takes a single image at regular time intervals. When the images are grouped in rapid sequential order, viewers are able to see growth & movement of an object or process over time, moving an “Elusive Concept” to “An Inspired Concept”!

As you scroll through The Ecosystem pics, imagine the power of capturing Visual Images for Video & Film:

“For a Major National PR Campaign

“For Targeted Videos of The Story of Agroforestry, Its CC Importance & Educational Videos

(Which Visual Images in these photos just captured you?) (What do you see? What could happen on this land?

(To Spark your ideas even further, check out: “PR Campaign”& “Case Statement”)

Picture Multiple Fixed Camera Captures of Several Wide-Angle Broad Landscape Visuals for “The Big Story”

Picture Multiple Camera Captures of Specific Ecosystem Areas for Specific Canopy Crop Possibilities

Picture Multiple Video Captures of Specific Educational “How To”, “When To”, and “Why To” Videos

“Picture” the Inspiring Music that will underline each magical Time-Lapse Visual Capture

As you scroll through The Ecosystem photographs, what Visual Stories does your camera “see”?

The Value of “Show Me!”

Visual Images can build **Belief**, dispel **Myths and Pre-Conceptions**, **Communicate to the Heart and Mind**, Create **Inclusion, Inspiration and Vision**, engender **Confidence** and engage **Passion- - deeply - - in seconds**. Especially with Inspiring Music & Narrative. Guided Visuals with Narrative and Music communicate *emotionally* and lastingly...We can capture it all at Discovery Forest with a carefully crafted Visual Plan and “Lock Down” discipline.

Primary Myths to Dispel with PR Campaign Visuals:

No Valuable Food Can Grow in Shade

Yes, it can!!

Forest Conditions can’t produce any significant or meaningful abundance

Just watch!!

What kinds of shade grow what kinds of food? (Anything I’d really want?)

Check it out!

SHOW ME!

Good Visuals inspire, build belief, arouse curiosity, address anxieties and also *deeply* answer troublesome questions *quickly and decisively*:

Agroforestry????? Whaaaaat???? What **IS** IT?

How much **food** does it produce?

What **kind** of food?

What can grow and in **what kind** of Shade?

What Does an Agroforestry Plot **Look** Like?

Can I do this? (any of this, some of this, all of this) **in my suburban back yard or community plot?**

What will I **get** out of this if I Decide to Do it?

How much **work** is it? Will it be worth it?

How much **land** do I need?

How long would it take and to get what return? What does the time/money investment produce in 5 years?

Could this work in an **urban** area?

What **else** does Agroforestry produce besides Food and Medicinals?

Can it be **beautiful**? (Will my yard look ugly? Will my neighbors hate me?)

How does Forest Farming “feed” additional, important **multisensory hungers** that people have?

Could this be “a shared-work **community garden**”?

